



CAN UNCLASSIFIED

DRDC | RDDC  
technologysciencetechnologie



# On the Ability of Morphometric Indices of Skull Diploë to Explain Variation in Bone Fracture Force and Fracture Strain in Four-Point Bending: A Preliminary Step Toward A Simulant Fracture Model

Kevin Adanty, Olivia Tronchin, Kapil B. Bhagavathula, Karyne N. Rabey, Micheal R. Doschak, Daniel Romanyk, James D. Hogan  
University of Alberta

Simon Ouellet  
DRDC – Valcartier Research Centre

Thomas A. Plaisted, Sikhanda S. Satapathy  
Army Research Laboratory

Christopher R. Dennison  
University of Alberta

International Research Council on Biomechanics of Injury (IRCOBI) Conference 2020  
IRC-20-93  
Munich, Germany  
pp. 821–822

Date of Publication from Ext Publisher: September 2020

**Terms of Release:** This document is approved for public release.

The body of this CAN UNCLASSIFIED document does not contain the required security banners according to DND security standards. However, it must be treated as CAN UNCLASSIFIED and protected appropriately based on the terms and conditions specified on the covering page.

**Defence Research and Development Canada**

**External Literature (P)**  
DRDC-RDDC-2022-P134  
March 2022

CAN UNCLASSIFIED

## CAN UNCLASSIFIED

### IMPORTANT INFORMATIVE STATEMENTS

This document was reviewed for Controlled Goods by Defence Research and Development Canada using the Schedule to the *Defence Production Act*.

Disclaimer: This document is not published by the Editorial Office of Defence Research and Development Canada, an agency of the Department of National Defence of Canada but is to be catalogued in the Canadian Defence Information System (CANDIS), the national repository for Defence S&T documents. Her Majesty the Queen in Right of Canada (Department of National Defence) makes no representations or warranties, expressed or implied, of any kind whatsoever, and assumes no liability for the accuracy, reliability, completeness, currency or usefulness of any information, product, process or material included in this document. Nothing in this document should be interpreted as an endorsement for the specific use of any tool, technique or process examined in it. Any reliance on, or use of, any information, product, process or material included in this document is at the sole risk of the person so using it or relying on it. Canada does not assume any liability in respect of any damages or losses arising out of or in connection with the use of, or reliance on, any information, product, process or material included in this document.

- © Her Majesty the Queen in Right of Canada (Department of National Defence) and University of Alberta, 2020
- © Sa Majesté la Reine en droit du Canada (Ministère de la Défense nationale) et University of Alberta, 2020

CAN UNCLASSIFIED

## On the Ability of Morphometric Indices of Skull Diploë to Explain Variation in Bone Fracture Force and Fracture Strain in Four-Point Bending: A Preliminary Step Toward A Simulant Fracture Model

Kevin Adanty, Olivia Tronchin, Kapil B. Bhagavathula, Karyne N. Rabey, Michael R. Doschak, Daniel Romanyk, James D. Hogan, Simon Ouellet, Thomas A. Plaisted, Sikhanda S. Satapathy, Christopher R. Dennison

### I. INTRODUCTION

The diploë of the calvarium has complex morphometric properties defined by density, porosity and geometrical parameters describing trabecular microarchitecture. It is reasonable to speculate, therefore, that the mechanical response to an external load, and fracture tolerance, of the calvarium, is related to geometric, morphometric and mechanical properties [1-2]. A recent study suggests that ascertaining the correlation between characteristics such as sex, age and morphometry of the human skull with fracture response can advance the development of subject-specific injury (fracture) models [3]. Data for morphometric properties, such as bone mineral density (BMD), porosity and trabecular structure, in addition to mechanical properties, could allow the development of physical surrogates that can effectively model skull fracture [4]. Currently, there is limited data quantifying geometric, morphometric and mechanical properties for diploë in association with fracture [2]. In this study, our objective was to report on preliminary work investigating whether morphometric properties of diploë can predict variation in measurements at fracture using linear regression analyses. We hypothesised that the variability in diploë morphometry can statistically predict the variability in measurements at fracture. This work is part of a broader program on calvarium fracture that comprises the development of simulants on the bases of geometry, morphometry and mechanical properties.

### II. METHODS

All protocols were approved by the University of Alberta Research Ethics Board (ID: Pro00089218).

#### Specimens

From 25 embalmed cadavers (Male: 13; Female: 12), two specimens were extracted from the calvarium using a Mopec autopsy saw, one in the frontal and one in the parietal region (N=50). In this study, we reported on a subset of n=9 male specimens (Age:  $81 \pm 9$  years old) from the parietal region (Fig. 1a)). The average dimensions (mm) of the specimens were bottom length (L):  $55.7 \pm 1.3$ , centre thickness (T):  $5.5 \pm 0.6$  and centre width (W):  $8.6 \pm 0.4$  (Fig. 1b, c)). All specimens were free from bone-related disease.

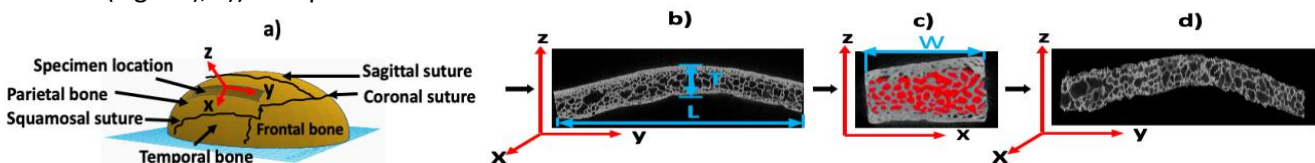


Fig. 1. a) Parietal specimen location on the calvarium. b) Micro-CT scanned specimen. c) Diploë region of interest (ROI) per cross-section (shaded red). d) Resultant diploë volume of interest (VOI) for morphometric analysis.

#### Micro Computed Tomography (Micro-CT)

Specimens were Micro-CT scanned at a resolution of  $18 \mu\text{m}$  (Bruker-Skyscan 1176) (Fig. 1b)) along with calibration phantoms with known concentrations of calcium hydroxyapatite (HA). Each scan was reconstructed and analysed using CT-Analyser software. Delineating the diploë ROI from the cortical regions was achieved manually on a slice-by-slice basis (Fig. 1c)). In the diploë VOI (Fig. 1d)), the average morphometric variables were determined and used as predictors for linear regression analyses: BMD, porosity, trabecular thickness (Tb.Th), trabecular separation (Tb.Sp) and trabecular number (Tb.N). Tb.Th is the average thickness of trabeculae, Tb.Sp is the average distance between trabeculae, and Tb.N is the average number of trabeculae per mm.

#### Quasi-Static 4-point Bending

Symmetrical 4-point bending on the specimens were carried out using an Instron E3000 (Fig. 2a)). This configuration generated as close as possible a state of pure bending at the mid-region of the specimens, thus, K. Adanty (adanty@ualberta.ca) is a PhD student, O. Tronchin is an undergraduate student, K. B. Bhagavathula is a PhD student, D. Romanyk is an Assistant Prof., J. D. Hogan is an Assistant Prof. and C. R. Dennison is an Associate Prof., all in Mechanical Engineering, University of Alberta, Canada. K. N. Rabey is an Assistant Prof. in Medicine and Dentistry and M. R. Doschak is a Prof. in Pharmacy and Pharmaceutical Sciences., both at the University of Alberta, Canada. S. Ouellet is with Defence Research and Development Canada at Valcartier Research Centre. T. A. Plaisted and S. S. Satapathy are with US Army Combat Capabilities Development Command - Army Research Laboratory.

fracture was mainly due to bending stress as opposed to a complex stress-state comprising of both bending and shear. Each test was displacement controlled at 2 mm/min. Two mechanical response variables were measured until fracture and were used as the dependent variables for the linear regression analyses: (1) Outer and inner cortical surface strain (%) using Fiber Bragg Gratings (FBGs); and (2) Force (N) applied by the inner fixtures recorded using a 5 kN Dynacell. FBGs are strain transducers embedded within optical guides. Perturbations on the FBG, such as strain, can be quantified based on proportional changes in a Bragg wavelength ( $\Delta\lambda_B$ ) (Fig. 2b)).

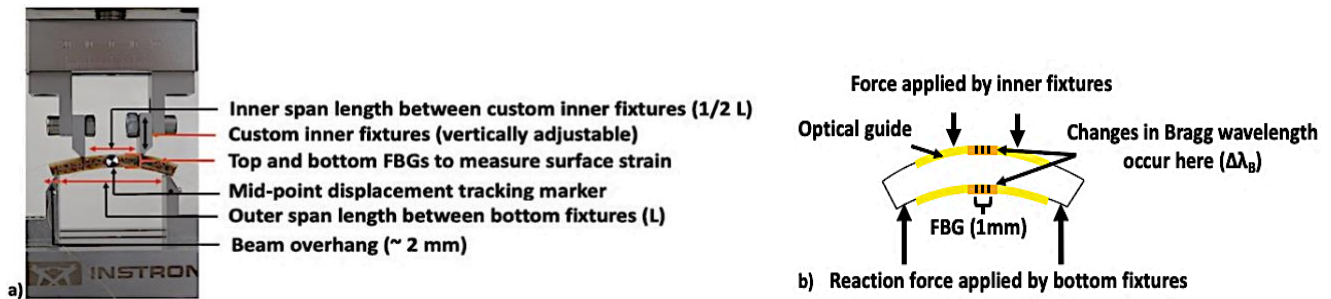


Fig. 2. a) 4-point bending test. b) 2-D schematic of the mounted FBGs on a specimen using cyanoacrylate. Equation to compute strain:  $\mu\epsilon = \Delta\lambda_B / S_\epsilon$  where  $\mu\epsilon$  is micro strain and  $S_\epsilon$  is the FBG sensitivity (1.21 pm/  $\mu\epsilon$ ).

### III. INITIAL FINDINGS

Linear regression analyses (SPSS) determined that Tb.Sp explained 33% and 34% of the variation in outer and inner cortical surface strain (Fig. 3), respectively. 42% and 41% of the variation in fracture force was explained by BMD and porosity, respectively (Figs. 4 and 5). Tb.Th and Tb.N explained less than 30% of the variation in fracture force and strain. None of the regression models in this study was significant, therefore we did not have evidence to reject the null hypothesis, which states that the slopes of the models are equal to zero ( $p > 0.05$ ).

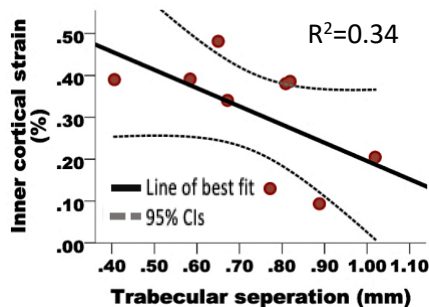


Fig 3. Linear regression model of Inner cortical strain vs. Tb.Sp.

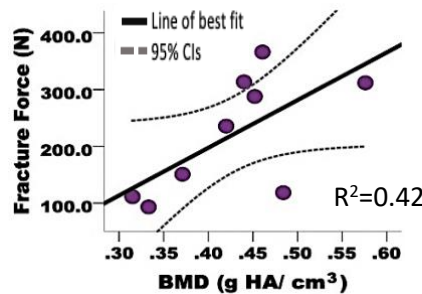


Fig 4. Linear regression model of Fracture force vs BMD.

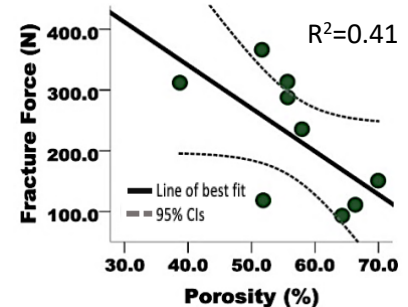


Fig 5. Linear regression model of Fracture force and porosity.

### IV. DISCUSSION

Additional experiments leading to larger sample sizes are required to infer whether these regression models explain fracture better than chance. The mean fracture strains (outer:  $-0.30 \pm 0.12\%$  and inner:  $0.31 \pm 0.13\%$ ) are consistent with previous literature, which reported inner cortical strains between 0.33% and 0.76% [5]. In compression tests of cranial bone [2], fracture force scaled with BMD and scaled inversely with porosity. The findings in the present work convey similar scaling relationships. In future work, we will present data that will comprise a greater sample size and embalmed and fresh-frozen tissue loaded at both quasi-static and dynamic rates. This data will inform our efforts to design simulant material models appropriate for skull fracture in impact.

### V. ACKNOWLEDGEMENTS

This work was financially supported by US Army Research Labs through contract #: W911NF1920336.

### VI. REFERENCES

[1] Wood, J., *J Biomech*, 1971.  
 [2] McElhaney, J., et al., *J Biomech*, 1970.  
 [3] De Keghel, D., et al., *J Mech Behav Biomed*, 2019.  
 [4] Roberts, J., et al., *Front Bioeng Biotech*, 2013.  
 [5] Hubbard, R., et al., *J Biomech*, 1971.

**DOCUMENT CONTROL DATA**

\*Security markings for the title, authors, abstract and keywords must be entered when the document is sensitive

1. ORIGINATOR (Name and address of the organization preparing the document. A DRDC Centre sponsoring a contractor's report, or tasking agency, is entered in Section 8.)  International Research Council on Biomechanics of Injury (IRCOBI) Conference 2020 Munich (Germany)		2a. SECURITY MARKING (Overall security marking of the document including special supplemental markings if applicable.)  CAN UNCLASSIFIED
		2b. CONTROLLED GOODS  NON-CONTROLLED GOODS DMC A
3. TITLE (The document title and sub-title as indicated on the title page.)  On the Ability of Morphometric Indices of Skull Diploë to Explain Variation in Bone Fracture Force and Fracture Strain in Four-Point Bending: A Preliminary Step Toward A Simulant Fracture Model		
4. AUTHORS (Last name, followed by initials – ranks, titles, etc., not to be used)  Adanty, K.; Tronchin, O.; Bhagavathula, K.B.; Rabey, K.N.; Doschak, M.R.; Romanyk, D.; Hogan, J.D.; Ouellet, S.; Plaisted, T.A.; Satapathy, S.S.; Dennison, C.R.		
5. DATE OF PUBLICATION (Month and year of publication of document.)  September 2020	6a. NO. OF PAGES (Total pages, including Annexes, excluding DCD, covering and verso pages.)  2	6b. NO. OF REFS (Total references cited.)  5
7. DOCUMENT CATEGORY (e.g., Scientific Report, Contract Report, Scientific Letter.)  External Literature (P)		
8. SPONSORING CENTRE (The name and address of the department project office or laboratory sponsoring the research and development.)  DRDC – Valcartier Research Centre Defence Research and Development Canada 2459 route de la Bravoure Québec (Québec) G3J 1X5 Canada		
9a. PROJECT OR GRANT NO. (If appropriate, the applicable research and development project or grant number under which the document was written. Please specify whether project or grant.)  CANSOFCOM Project 06ba	9b. CONTRACT NO. (If appropriate, the applicable number under which the document was written.)	
10a. DRDC PUBLICATION NUMBER (The official document number by which the document is identified by the originating activity. This number must be unique to this document.)  DRDC-RDDC-2022-P134	10b. OTHER DOCUMENT NO(s). (Any other numbers which may be assigned this document either by the originator or by the sponsor.)	
11a. FUTURE DISTRIBUTION WITHIN CANADA (Approval for further dissemination of the document. Security classification must also be considered.)  Public release		
11b. FUTURE DISTRIBUTION OUTSIDE CANADA (Approval for further dissemination of the document. Security classification must also be considered.)		

12. KEYWORDS, DESCRIPTORS or IDENTIFIERS (Use semi-colon as a delimiter.)

head injury; skull fracture; bone simulant

13. ABSTRACT/RÉSUMÉ (When available in the document, the French version of the abstract must be included here.)

The diploë of the calvarium has complex morphometric properties defined by density, porosity and geometrical parameters describing trabecular microarchitecture. It is reasonable to speculate, therefore, that the mechanical response to an external load, and fracture tolerance, of the calvarium, is related to geometric, morphometric and mechanical properties. A recent study suggests that ascertaining the correlation between characteristics such as sex, age and morphometry of the human skull with fracture response can advance the development of subject-specific injury (fracture) models. Data for morphometric properties, such as bone mineral density (BMD), porosity and trabecular structure, in addition to mechanical properties, could allow the development of physical surrogates that can effectively model skull fracture. Currently, there is limited data quantifying geometric, morphometric and mechanical properties for diploë in association with fracture. In this study, our objective was to report on preliminary work investigating whether morphometric properties of diploë can predict variation in measurements at fracture using linear regression analyses. We hypothesised that the variability in diploë morphometry can statistically predict the variability in measurements at fracture. This work is part of a broader program on calvarium fracture that comprises the development of simulants on the bases of geometry, morphometry and mechanical properties.