

DEFENCE **RiD** DÉFENSE

Capability engineering Process WBE

for ARP CAS4M
 Christophe Nécaille, SdS
 January 15, 2009

Defence Research and Development Canada / Recherche et développement pour la défense Canada

Canada

RiD Outline

- (0)- JFS/CapDEM return on experience
- CEP in 30 Seconds
- A WBE Proposal
- Challenges
- Look; we're almost at the 1st milestone !
- The ARP-PM CEP Starting ToolKit

Defence R&D Canada • R & D pour la défense Canada

RiD JFS/CapDEM return on experience

- + • Implication vs limited PY
- + • Meetings on CEP only with key players
- • Dependency between JFS workplan and CEP workplan
- • Version in production vs development (be ready on time, updated version...)
- Lessons Learned from JFS

Defence R&D Canada • R & D pour la défense Canada

RiD CEP in 30 Seconds

- Now :

- Future :
 - CEP is continuously improving
 - Will provide customized process/deliverables according to each projects characteristics
 - Will be database-supported
 - PACEM-RE (ARP 10BD)

Defence R&D Canada • R & D pour la défense Canada



CEP WBE (1)

- What CEP can do for the ARP
 - Set up a customized CEP specific to your project (activities, workplan & deliverable templates tailored for the ARP). (Deliverable #1)
 - Methodology guidance and coaching throughout the ARP.
 - Might help to set-up *temporary* contractual resource for the ARP, in conjunction with the IOBD ARP.
- What CEP **can't do** for the ARP :
 - Provide subject matter content
 - Produce deliverables
 - Ensure results if workplan/deliverables are too much deviated



CEP WBE (2) – Proposed Activities

- 1st meeting
 - Explain the WBE
 - Expose the PM to the CEP
 - Explain the challenges and implication of choosing CEP
- Prior the project official launch
 - Monthly meeting with the PM to explain the methodology stages
 - Fitting the CEP to the project stage by stage. Assistance for establishing the artefacts needed for the project definition stage within the CEP :
 - Context, Project Team, Stakeholders, mandate.
- Project Launch (1st April 09 (?))
 - CEP has been adjusted for the project (Deliverable #1)
 - PM has a detailed CEP workplan tailored for his project. (Deliverable #2)
- During the Project execution
 - assist and coach the PM and key players with the application of CEP.
 - Monthly meetings to capture the progress report with respect to the CEP application (state of application, obstacles, suggestions for improvement, lessons learned ...)
- At the end of each important stage
 - Collection of lessons learned from the CEP application
 - Validation of the next stage workplan/activities/deliverables
- Toward the end
 - Experience check;
 - Report on lessons learned and improvement to be done on the CEP. (Deliverable #3)



Challenges

- CEP adoption needs project commitment
- The Fantastic CEP Team is *very* busy :
 - Total offer or .1 p.y for the next 12 months (24 p. days)
 - SdS is looking to recruit Ings & DSes
 - Offer might increase with time

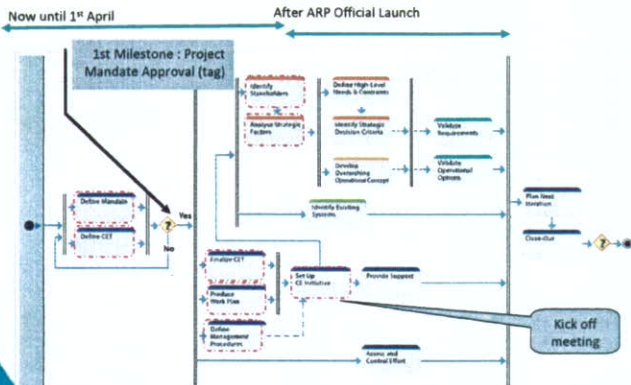


Way ahead

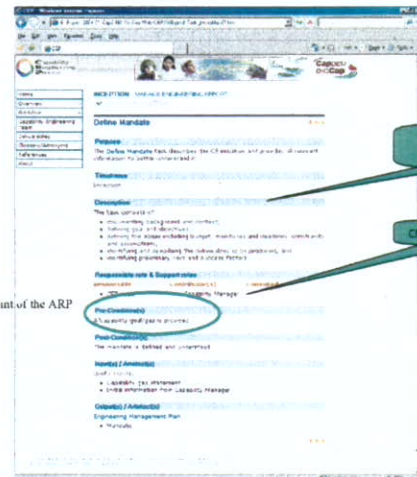
- ARP DAMAS PM/Team
 - Decide whether CEP will be used or not
 - PM to get trained on CEP
 - Project Workplan to be produced.
- CEP Team
 - Work with ARP PM to make CEP fits the ARP
 - Will ensure PM coaching and review of CEP



We're almost at the 1st Milestone !



CEP 1st Stage : Inception
 Activities that can be started now



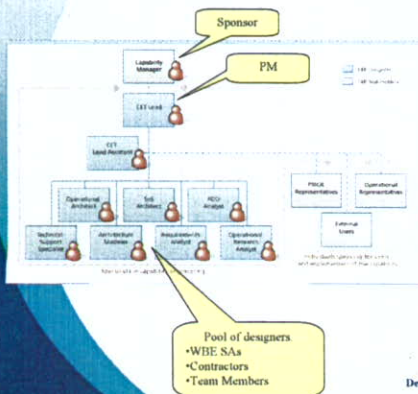
Starting point of the ARP

Corresponds to ARP submission info

CM = ARP Military Sponsor



Define CET



Pool of designers
 • WBE SAs
 • Contractors
 • Team Members

INCEPTION - PHASE 1: DEFINE EFFORT

Define CET

Purpose
 The Define CET task identifies the CET designers and defines their roles and responsibilities.

Timeline
 Inception

Description
 The task consists of:
 • developing the CET Core team Organizational Chart,
 • identifying and confirming S&T designers, and
 • tabling CET roles and responsibility profiles to CE initiative specific needs

Responsible role & Support roles

Responsible	Contributor(s)	Customer
• CET Lead	• Capacity Manager	• Operational CET Designers

Pre-Condition(s)
 The CET designers are confirmed.

Post-Condition(s)
 Current situation is documented and completed.

Input(s) / Analysis(s)
 Engineering Management Plan
 • Managers

Output(s) / Analysis(s)
 Engineering Management Plan
 • Organization



Tools to bring back home :

- e-CEP 2008
 - (Production version on file)
 - Online : <http://www.capdem.forces.gc.ca/documents/index.htm>
- CEPV4 Draft Report (the complete documentation)
- MsProject Generic CEP Detailed Planning
- CEP Brochure
- This presentation.



**CEP is a prototype of
“Capability Engineering Methodology”**

- The more it is used, the more it improves.
- The more it is used, the more it is known
- The best it is known, the more it will be used !

Defence R&D Canada • R & D pour la défense Canada

